



**SYMBIOSIS INSTITUTE OF TECHNOLOGY (SIT)**

Constituent of SYMBIOSIS INTERNATIONAL (DEEMED UNIVERSITY)

# M.TECH

## ARTIFICIAL INTELLIGENCE AND MACHINE LEARNING



### OUR RANKINGS

INDIA TODAY 2020



Among Emerging Private  
Colleges of the Century



Among Private Engineering  
Colleges in West Zone

OUTLOOK 2019



Among all Private Engg.  
Colleges in Pune



Among Private Colleges  
in Maharashtra



Among Private Engineering  
Colleges in West Zone

# DEPARTMENT OF ARTIFICIAL INTELLIGENCE AND MACHINE LEARNING

Symbiosis Institute of Technology, a constituent of Symbiosis International University was established in the year, 2008 and currently offers B.Tech programmes in Civil Engineering, Computer Science and Engineering, Electronics & Telecommunication Engineering, Information Technology, Mechanical Engineering, Robotics and Automation, Artificial Intelligence and Machine learning and M.Tech programmes in Artificial Intelligence and Machine Learning, Embedded Systems, Robotics and Automation. Research programmes leading to Ph.D. Degree were introduced in Faculty of Engineering of Symbiosis International University in 2010.

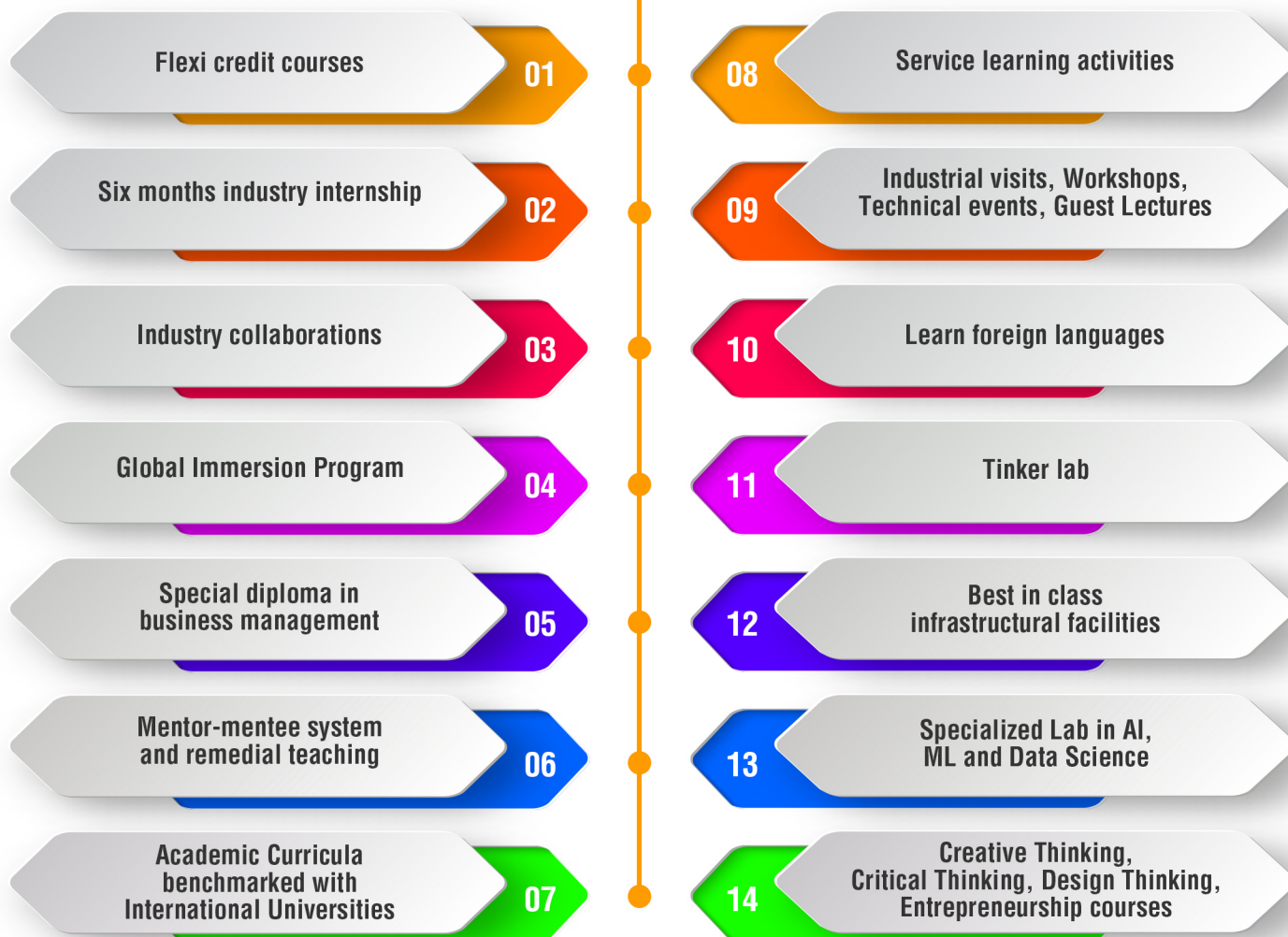
Symbiosis Centre for Applied AI (SCAAI) is established in May 2019 and is affiliated to Symbiosis Centre for Research and Innovation (SCRI).

The primary aim of this centre is to spearhead the advancement and novel developments in various application areas and promotion of the advanced research and education in the field of AI. Along with this SCAAI engages in interdisciplinary research to address pertinent issues that could involve a huge spectrum such as finance and banking to healthcare.

Symbiosis Institute of Technology in collaboration with Symbiosis Centre for Applied AI (SCAAI) offers, program in B.Tech in Artificial Intelligence and Machine Learning with an intake of 60, M.Tech in Artificial Intelligence and Machine Learning with an intake of 24 students.

AI and ML is coming up as a multidisciplinary backbone technology to enhance the performance of many sectors. However, there is a significant need of trained individuals who would understand AI applicability and on ground implementation aspects. AI and ML technology would leverage the employability skills of an Engineer and open better career opportunities and research avenues.

## HIGHLIGHTS





## 6 MONTHS INTERNSHIP SEMESTER

- Over 150 Companies on board from 2013 to till date.
- Over 600+ students successfully completed their internship across various disciplines of Computer Science and information Technology.
- 41 students completed their internship internationally.

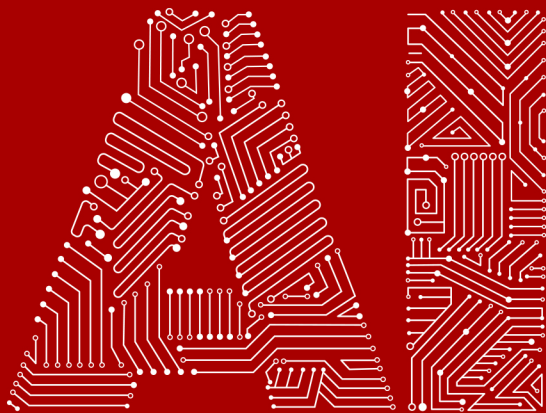


### INTERNATIONALIZATION

#### Global Immersion Programme

The partner Universities abroad where SIT students participate under Global Immersion Program:

- Ingolstadt University, Germany
- Indiana University Purdue University, Indianapolis, U.S.A
- Nanyang Technological University, Singapore
- Leibniz University, Germany
- Berlin School of Law and Economics
- Telecom Ecole De Management, Paris
- University of Adelaide, Australia
- University of Malta, Malta
- King Mongkut's University, Thailand
- University of Malaya, Malaysia
- Ritsumeikan University, Japan
- Hanyang University, South Korea
- Western University, Canada
- RUDN University, Russia



### RESEARCH INTERNSHIP OPPORTUNITIES @ SYMBIOSIS CENTRE FOR APPLIED AI (SCAAI)

Symbiosis Centre for Applied AI (SCAAI) offers research internships in the following research areas.

- NATURAL LANGUAGE PROCESSING
- ROBOTICS/REINFORCEMENT LEARNING
- GENOMICS
- HEALTHCARE
- EXPLAINABLE AI

INTERNSHIP OPPORTUNITIES ARE OFFERED FROM 2ND YEAR OF THEIR UG STUDIES.  
DIFFERENT OPTIONS ARE PROVIDED.

Internships to students during/between semesters: min 2 months to 1 year

Internships after graduation (with pre-placement offer for selected candidates)

# PLACEMENTS @ SIT PUNE

## TOP RECRUITERS



## M.TECH AI & ML

### INTAKE: 24

Eligibility: Engineering Graduate (B.E./ B.Tech.) in ANY relevant disciplines of Engineering with minimum four years duration from any recognized University/Institution of National Importance with a minimum of 50% marks or equivalent grade (45% Marks or equivalent grade for Scheduled Caste/Scheduled Tribes)

